



## Cherry Garden Street, London, SE16 4PE

\*\*\* MOVE IN DATE 4TH MAY 2026 \*\*\*

A newly refurbished one bedroom garden apartment in one of the most sought after North Bermondsey residential areas, steps from the river Thames and moments from Bermondsey And Rotherhithe Stations.

The property boasts a good sized open plan living area leading into a spacious patio garden ideal for al fresco dining, a contemporary kitchen, a double bedroom with plenty of storage space, and a lavishly designed bathroom. Additional benefits include an additional front patio and access to residents unallocated parking.

- Garden Apartment
- High-End Finish
- New Bathroom and New Kitchen
- Wooden Flooring Throughout
- Steps From River Thames
- Two Minutes Walk From Bermondsey Station
- Two Private Patios / Gardens
- All Amenities On Your Doorstep
- Fully Furnished

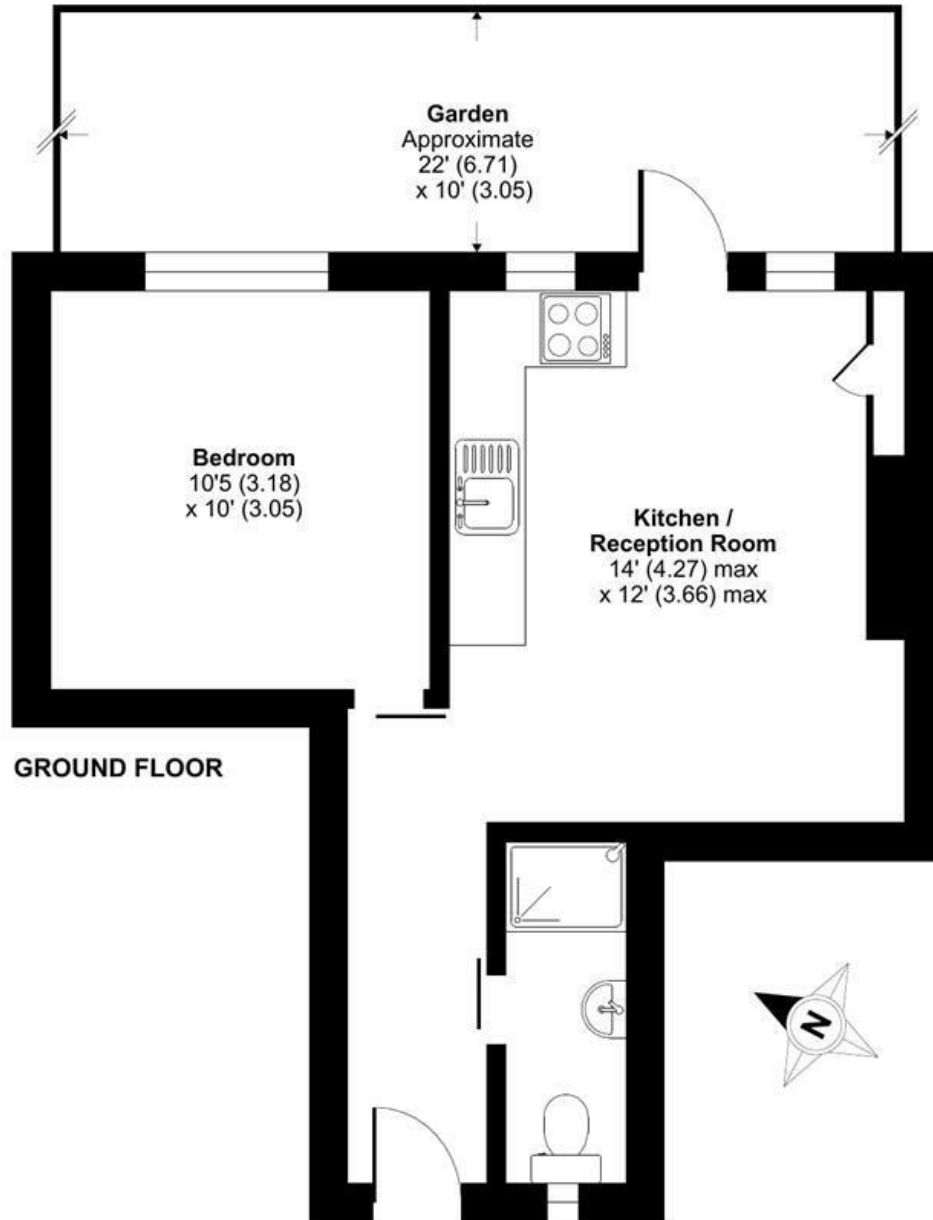
**Alex & Matteo**  
ESTATE AGENTS

**£1,500 Per month**

# Cherry Garden Street, London, SE16

Approximate Area = 357 sq ft / 33.2 sq m

For identification only - Not to scale



**Alex & Matteo**  
ESTATE AGENTS



**Certified  
Property  
Measurer**

Floor plan produced in accordance with RICS Property Measurement Standards incorporating International Property Measurement Standards (IPMS2 Residential). © nitchcom 2023. Produced for Alex & Matteo Estate Agents. REF: 1053040

Energy Efficiency Rating		
	Current	Potential
Very energy efficient - lower running costs		
(92 plus) <b>A</b>		
(81-91) <b>B</b>		
(69-80) <b>C</b>	69	76
(55-68) <b>D</b>		
(39-54) <b>E</b>		
(21-38) <b>F</b>		
(1-20) <b>G</b>		
Not energy efficient - higher running costs		
England & Wales		
	EU Directive 2002/91/EC	